

INCORPORATING

DermResults

INTO YOUR SKINCARE REGIMEN

DermResults products deliver significant and visible benefits when added to any Arbonne skincare regimen. They're effective when used separately, but results can be even better when combined!

ILLUMINATING SKIN THERAPY CONCENTRATE

Powerhouse Ingredients



STABILIZED VITAMIN C

with potent antioxidant properties, has been clinically studied to help reduce the appearance of oxidative damage from environmental stressors such as pollution, weather and ozone.



BAKUCHIOL

a plant-based retinol alternative, helps reduce the look of facial wrinkles and is better tolerated on the skin than retinol.



FERULIC ACID ETHYL ESTER

with antioxidant properties, helps support the overall appearance of skin.

Tips for using the Illuminating Skin Therapy Concentrate

- ★ Squeeze 2-3 "water weight" drops into your palm and apply with fingertips around the face
- ★ Alternatively, you can use it on hands, neck, or décolleté by applying a few drops and massaging it into the skin
- ★ Layer between toner and serum, but ensure the product is dry before moving onto the next step
- ★ Use this product in the morning, at night, or both depending on your skin's needs; know that your skin may experience an adjustment phase, especially when layering with other active ingredients
- ★ Can also be used after serum or re-applied throughout the day to help deliver continuous defense against environmental aggressors

DAILY RADIANCE PEEL PADS

Powerhouse Ingredients



CAVIAR LIME EXTRACT

from a unique fruit native to the Australian coast and filled with citrus pearls, supports natural cell renewal through exfoliation to reveal even-textured, radiant-looking skin.



PHYTIC ACID

helps gently slough away dead surface skin cells.



SEA WATER

hydrates to help minimize the look of pores.

Tips for using the Daily Radiance Peel Pads

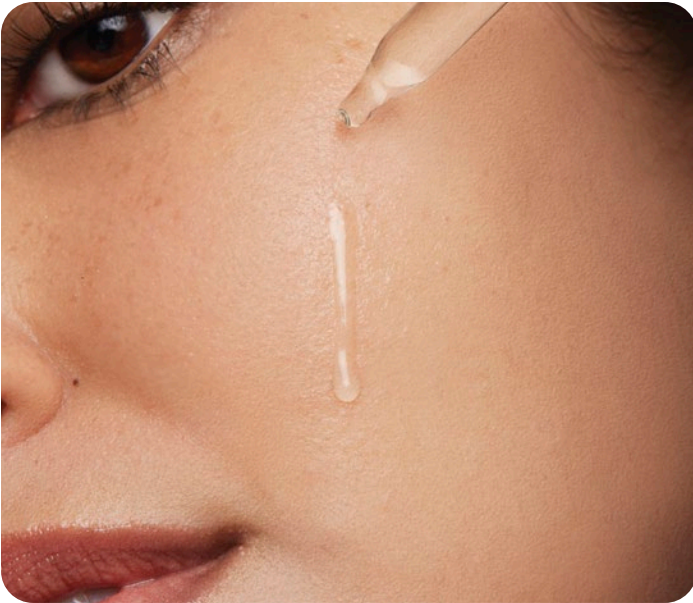
- ★ After cleansing, wipe pad over face, neck, décolleté and top of hands in circular motions
- ★ Use once daily, morning or night, but be mindful to enhance with adequate sunscreen protection if using in the morning

★ ★ **BETTER TOGETHER** ★ ★

Use the DermResults Daily Radiance Peel Pads after your cleanser, then apply your toner (if you wish!), followed by the DermResults Illuminating Skin Therapy Concentrate.

Tips for Transitioning Skin

- ✦ If you have sensitive skin, try a patch test on the inside of your forearm before incorporating this into your skincare regimen
- ✦ Never skimp out on hydration, exfoliation and sun protection to help support the skin while it is adjusting to a new regimen
- ✦ Allow skin to adjust to a core skincare regimen, such as AgeWell, before beginning to introduce an additional targeted product



DermResults Daily Radiance Peel Pads

vs.

Arbonne Intelligence Genius Nightly Resurfacing Pads

The DermResults Peel Pads deliver radiance through gentle exfoliation. The **Caviar Lime Extract** is a next generation fruit acid – and when combined with **Phytic Acid**, gently exfoliates. The pads can be used both morning and night if desired, but most people will prefer once per day.

The Arbonne Intelligence Resurfacing Pads are completely different. They contain retinol and **Bakuchiol** that help make the skin look more evenly toned. Because they contain retinol, the pads are strictly nighttime use only, and for some, can only be used a few times a week to minimize sensitivity.

You can alternate between the DermResults Daily Radiance Peel Pads, Arbonne Intelligence Genius Nightly Resurfacing Pads and BrightenUp Targeting Essence in your nightly regimen.

